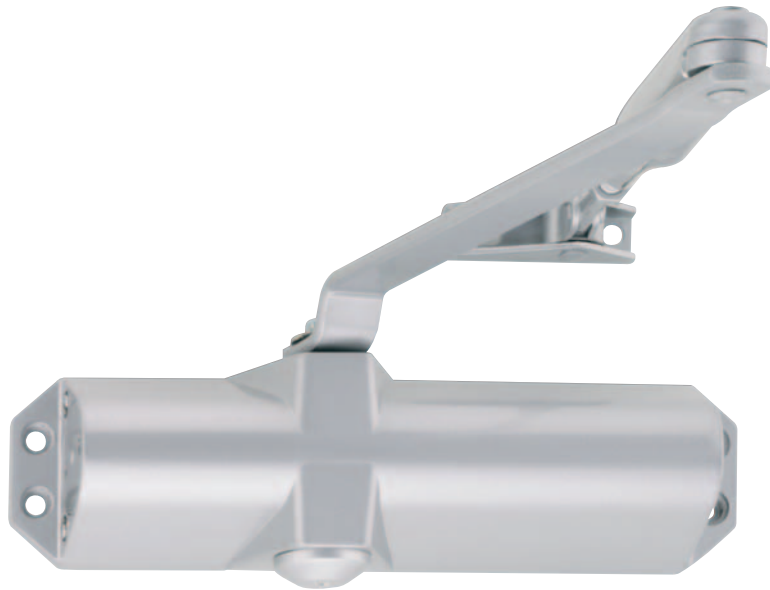


# TS-10 D

PRODUCT INFORMATION





## TS-10 D

### Performance features

- Closing speed continuously adjustable.
- Closing force incrementally adjustable.
- Latching speed adjustable.
- Same version for DIN-L and DIN-R.
- Max. door width: 1100 mm.

Different closing force achieved by re-adjusting the door closer on the door leaf.

### Application range

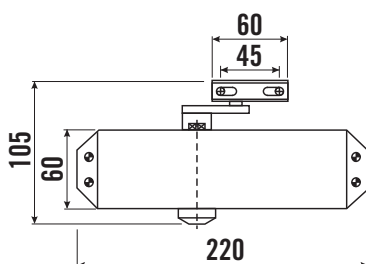
- For light and heavy inside doors.
- For light outside doors.

### Colours

Silver RAL 9006

White RAL 9016

Brown RAL 8014



- With continuous closing force adjustment 2/3/4 according to EN.