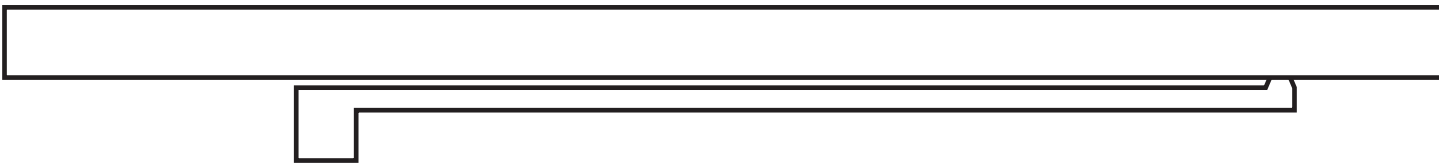
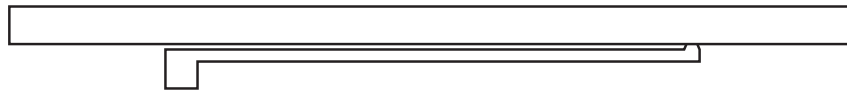


SLIDE RAIL B

PRODUCT INFORMATION

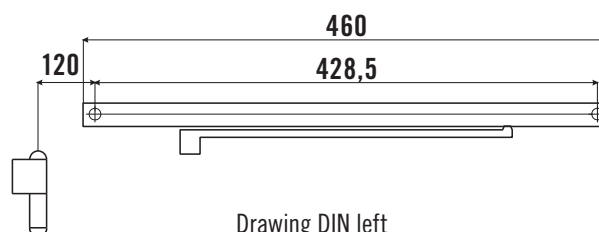


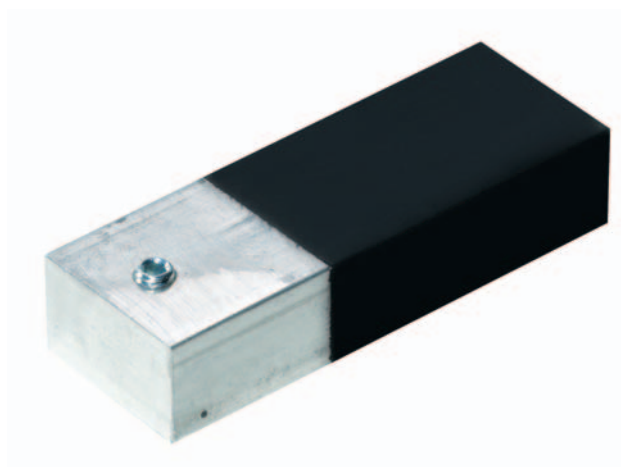


Slide rail B

Performance features

Slide rail **Basis**, for TS-12 (length 402 mm), TS-51, TS-61 (length 460 mm) and Multi-Genius (top-mounted system), for direct screw connection. For use in preventive fire protection only in connection with TS-12, TS-51, TS-61 & Multi-Genius.





Accessory set OL

Performance features

Mechanically universally adjustable opening limiting. Opening limiting angle can be locked by moving inside the slide rail.

Usable in slide rail Basis.

